



10 Dana Street #305  
Cambridge, MA 02136

dehartart@gmail.com  
617.354.8916

www.DeHartArt.com  
www.ColorsInMotion.com



2010  
**Colors In Motion™** Large-scale Installations

1981 - 1986  
Developed curriculum and taught Art for Interiors at the Boston Architectural Center (BAC)

2008 - Present  
**Colors In Motion™ DVD:** The Human Journey



2005 - Present  
**A Thousand Windows: A Long Walk In Beauty** - an installation

1972 - 1991  
Artist/Owner of DeHart Design Studio, Watertown, MA

2003 - Present  
**Paintings** on paper with water-based media.

1961 - 1973  
Fashion and Textile Designer for Boston and NY manufacturers (Garland Sweaters, Seaton Hall, Century Sportswear)



1989 - Present  
**Paintings on silk;** art-to-wear collections, and environmental silk paintings.

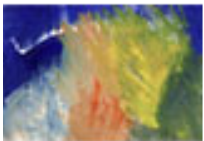
CUSTOM CORPORATE INSTALLATIONS

**Colors In Motion:** Original artwork for dynamic digital platforms.  
Applied Tapestries.  
Monumental atrium Aerial Sculptures.  
Large scale Handmade Paper Sculptures.  
Coordination of total artistic and graphic environments.  
Consult, design, fabricate, and install large scale media



SELECTED EXHIBITIONS

2010 Boston Convention and Education Center - *Colors In Motion* Dynamic Digital Media  
2009 British Consulate, Cambridge MA - Launch of *Colors In Motion DVD: The Human Journey*  
2008 Westport Art Group, MA - Retrospective: 45 Years of DeHart Art  
1981 Society of Arts and Crafts, Boston, MA - *Visions/Ambience*  
1980 Hyatt Regency, Cambridge, MA - *Multi-Dimensions*  
1975 Ann Addison Gallery, New York, NY  
1974 Boston City Hall Gallery, Boston, MA



SELECTED COMMISSIONS

IBM Showcase, New York City (tapestries)  
Price Waterhouse, Boston, MA (5 tapestries)  
Red Sea Palace, Jeddah, Saudi Arabia (8 tapestries)  
Portland Public Library, Portland, ME (ribbon banner)  
Middlebury College, Middlebury, VT (acoustical banners)  
Hyatt Regency, Cambridge, MA (7 story aerial sculpture)  
The Grand Hyatt, New York City, NYC (paper sculptures)  
Digital Equipment Corporation, Nashua, NH (tapestry)  
Digital Equipment Corporation, Hudson, MA (4 story aerial)  
Bank of Boston, Canton, MA (aerials in 13 areas)  
The Rouse Company, Gallery at Commuter Rail Center, Philadelphia, PA (city block long, 7 story high aerial)  
American Cable Systems, Beverly, MA (tapestry, 14 suspended paper sculptures, wall sculptures, graphic paintings)



EDUCATION

1961 Rhode Island School of Design, BFA